



FITTING GUIDE

Piranha Off Road Products are not associated in any way with FORD Motor Company Australia Pty Ltd or any of its related companies

Piranha Off Road Product are not associated in any way with MAZDA Australia Pty Ltd or any of its related companies

DETAILS	
Part Number	BTMFC
Approx. Fitting Time	2.5 Hours
Max Battery Size	Slimline -110 x 290 x 410 or 560mm
Battery Type	Cycle Duty – AGM
Tray Location	Cabin, Behind Rear Seat
Tray Weight / Dimensions	11Kg / 72cm x 37cm x 17cm

To Suit PX FORD RANGER & MAZDA BT50 DUAL CAB - 2011 onwards

PARTS INCLUDED WITH TRAY			
1	Tray	7	3 x M8 Flat Body Washer
2	Battery Clamp	8	3 x M8 Whizlock Nuts
3	1 x Crush Tube	9	9 x M8 Pilot Point Bolts, With Captured Washer 30mm
4	3 x Backing Plates	10	2 x M10 Bolts 40mm
5	3 x M10 Spring Washer	11	1 x M10 Bolt 125mm
6	3 x M10 Flat Body Washer		

**Recommended Isolator DBE140SF or DBE180-SX
Ford – Have dealer turn off “Smart Charge Feature”**

Piranha strongly recommend the use of a “Low Voltage Cut-out” for all installations if using DBE140SF or DBE180-SX

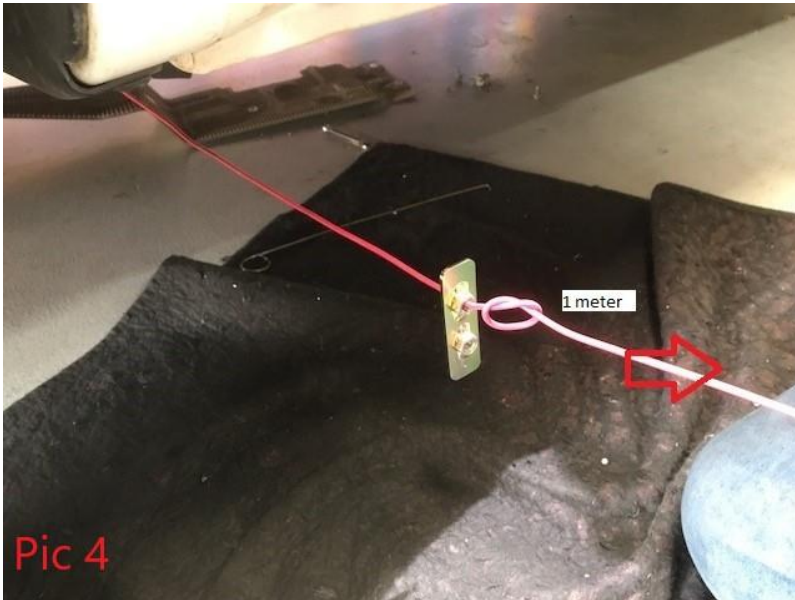


FITTING INSTRUCTIONS

1. Remove vehicle Jack and tool kit. **Pic 1**
2. Unbolt seat and move forward to create a working space behind seat.
3. Using an air hacksaw or similar, remove Jack & Tool Bag mounting points. Relocate Jack & Tool Bag to passenger side (discard the mounting points That have been removed.) **Pic 2**
4. Cut back wall lining. **Pic 5**
5. Grind any rough edges, seal any holes, & paint unpainted surfaces. **Pic 3**
6. Place tray in position and mark the 6 holes to the wall & 3 holes to the base, remove tray & using a step drill, drill 10mm holes.
Caution: when drilling wall holes Do Not drill through to Tub.
7. Get under car and remove heat shield around muffler to allow access to the bolts going though the bottom of the tray.
8. Place tray back in position and bolt up.



Please see reverse side for further instructions and fitting hints.



9. Bolt up the 3 x M8 base bolts first using M8 body washers from under the car.

Handy Fitting Hint:

Using a 3 meter length of thin electrical cable thread through the top hole in the middle of the tray & by getting under car with a hooked rod, pull cable through to ground. Leaving a meter of cable trailing, form a knot behind the 85mm backing plate. (See Pic 4)

10. Pull cable through from inside car until the backing plate is firmly behind the back panel inline with the top. Now use a screwdriver to locate and fit bolt to bottom hole, do up firmly but do not fully tighten yet.

Recommendation: Coat backing plates with a thin film of silicone.

- 11. Pull cable back and undo knot. Fit the top bolt to the middle bracket. Now repeat for the remaining backing plates using the 120mm long backing plate for the driver's side first, and then the 222mm long plate for the passenger side.
- 12. Now that all bolts are installed tighten all 9 bolts, Refit heatshield over muffler and Re-secure the back seat.
- 13. Fit battery to tray, either 100Ah or 150+Ah battery with the terminals located to the centre of the vehicle. Secure the battery clamp in place with 2 x M10 bolts with spring washer & flat washer. If using a smaller battery use the 125mm long M10 bolt with crush tube, spring washer & flat washer to prevent sideways movement.



The seat will require a firm push to lock back in place.

